

**TANCO AUTOWRAP
1260A MODEL 1996
OPERATORS HANDBOOK
AND
PART-LIST
WD65-1260-A-MO396**

INDEX1260A MODELPAGE NO.

GENERAL SAFETY INSTRUCTIONS	1/2/3
SAFETY INSTRUCTIONS	4
SAFETY DECALS	5
TECHNICAL SPECIFICATIONS	6
PRE DELIVERY INSTRUCTIONS	7/R
TRANSPORT INSTRUCTIONS	9
MACHINE IDENTIFICATION	9
PREPARATION OF A NEW MACHINE	9
HYDRAULIC CONNECTIONS	10
JUNCTION BOX AND CONTROLLER FOR 5 BANK VALVE	11
AUTOMATIC BALE WRAP CONTROLLER	12/13/14
OPERATOR ACCESSIBLE MONITOR PROGRAMMES	15
MODE OF OPERATION	16
OPERATING INSTRUCTIONS	17
WARNING; LIFT ARM	18
LOADING SEQUENCE FOR CLAAS QUADRANT BALES	19
WRAPPING SEQUENCE FOR A/W 1260 WITH CLAAS QUADRANT BALES	20
FILM OVERLAP SYSTEM	21/22
SERVICE AND MAINTENANCE	23
FILM THREADING DIAGRAM	24
GEARBOX CHAIN DRIVE TENSIONING SYSTEM	25
TURNABLE CHAIN DRIVE TENSIONING SYSTEM	26
BALE BELT TRACKING	27
BALE BELT TRACKING ILLUSTRATED	28
ELECTRICAL COMPONENTS 1260A MODEL	29
PARTS LIST FOR ABOVE	30
HYDRAULIC CIRCUIT DIAGRAM 1260A MODEL	31
HYDRAULIC COMPONENTS 1260A MODEL	32
PARTS LIST FOR ABOVE	33
FITTING 2 WAY SOLENOID VALVE	34
LIFT ARM HYDRAULIC COMPONENTS	35
CONSTANT INDEXING DRIVE ASSY	36
PARTS LIST FOR ABOVE	37
AUTOWRAP ILLUSTRATED	38
PARTS LIST FOR ABOVE	39
TURNABLE CHAIN DRIVE ASSEMBLY	40
PARTS LIST FOR ABOVE	41
BALE BELT ROLLER MOUNTING BRACKETS	42
PARTS LIST FOR ABOVE	43
FILM DISPENSING SYSTEM 1260A MODEL	44
PARTS LIST FOR ABOVE	44
VALVE/JUNCTION BOX/FILTER & DIVERTER VALVE MOUNTING BRACKET ASSEMBLY	45
END ROLLER MOUNTING BRACKET	46
LIFT ARM ASSEMBLY	47
PARTS LIST FOR ABOVE	48
HYDRAULIC BALE RAMP	49
PARTS LIST FOR ABOVE	50
FAULT FINDING SUMMARY	51
CUT AND START UNIT ILLUSTRATED	52
PARTS LIST FOR ABOVE	53
SLIP RING ASSY	54
SENSOR MAGNET MOUNTING BRACKETS	55
CUT AND START FAULT FINDING SUMMARY	56
OPTIONS AVAILABLE	57
LIGHTING KIT	58

GENERAL SAFETY RECOMMENDATIONS

Before operating the machine, always ensure that the tractor and machine meet with work safety and road traffic regulations.

BASIC PRINCIPLES

- 1: In addition to the recommendations given in this manual, legislation on work safety and accident prevention must also be respected.
- 2: Advice is indicated on the machine, specifying safety recommendations in order to prevent accidents.
- 3: Before travelling on public roads, the operator must ensure that the machine conforms to road traffic regulations.
- 4: Before starting work, the operator must be familiar with all machine controls, handling devices and their functions. Once at work, it is too late to do this!
- 5: Do not wear loose clothing which could become caught up in moving elements.
- 6: The tractor should be equipped with a safety cab.
- 7: Before starting up the machine and beginning work, check the surrounding area (beware of children!). Make sure there is sufficient visibility. Keep all people and animals away from the danger zone of the machine (risk of projection!).
- 8: Carrying people or animals on the machine when working or in transport is strictly forbidden.
- 9: Machine must only be attached to tractor using means provided and in accordance with current safety standards.
- 10: Special care should be taken when attaching or removing the machine from the tractor.
- 11: Before transporting the machine on public roads, ensure that all legally required guards and indicators (lights, reflectors ...) are in place and in good operation.
- 12: All operating controls (cords, cables, rods etc.) must be positioned so that they cannot be set off accidentally, risking accident or damage.
- 13: Before travelling on public roads, put the machine into its transport position as instructed in this operators manual.
- 14: Never leave the tractor seat while the machine is operating.
- 15: Drive speed must be adapted to ground conditions as well as to roads and paths. Always avoid abrupt changes of direction.
- 16: Before operating the machine, ensure that all safety guards are firmly in place and in good condition. If worn or damaged, replace immediately.
- 17: Before operating the machine, check the tightness of all nuts and bolts, particularly on fixing elements (blades, tines, knives, spades etc.,).
- 18: Keep clear of the machine operating area.
- 19: **WARNING!** Danger of crushing and shearing can exist when components are operated by hydraulic or pneumatic controls.
- 20: Before leaving the tractor or before adjusting, maintaining or repairing the machine, turn off the engine, remove the ignition key and wait until all moving parts have come to a complete stop.

SPECIAL SAFETY INSTRUCTIONS

1. Stop engine of tractor before working on machine.
2. Put a suitable prop under raised platform before working in this area.
3. Always raise Lift Arm and fit safety prop before transporting machine on public roads.
4. Lift Arms should always be lowered before operating turntable.
5. Ensure platform rollers are parallel to Lift Arm before arm is raised.
6. On Autowrap models fitted with hydraulic bale ramp it is essential that the hydraulic hose is not disconnected from the hydraulic cylinder or hydraulic accumulator. This system is charged under pressure. Also, do not attempt to open the hydraulic accumulator as this is a pressurised unit.

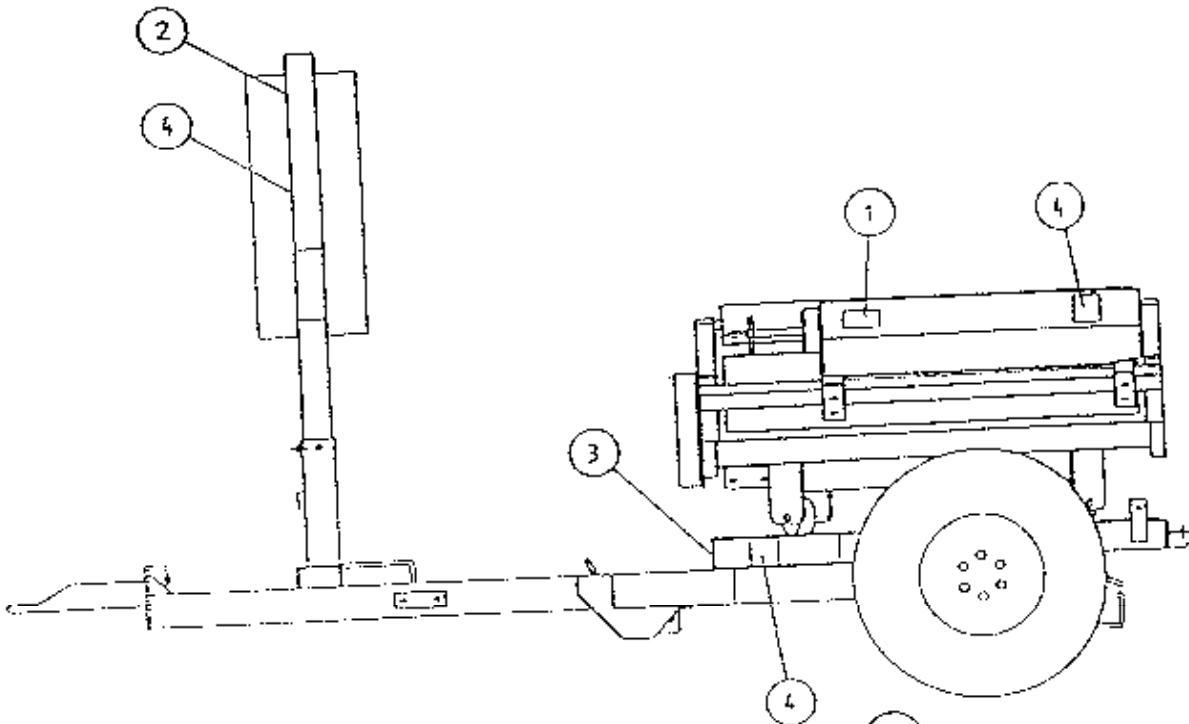
OPERATING SAFETY INSTRUCTIONS

1. Operators should have their hands on the controls at all times when machine is in use.
2. Autowrap control unit and level controls must remain in the tractor cab at all times. The operator must at no time leave the tractor cab when the machine is in motion.
3. Keep onlookers clear of machine at all times. Danger zone is 5 metres.
4. Beware of rotating turntable and all moving parts.
5. If not operated correctly the bale could fly off the turntable. The end support rollers must always be fitted. Do not exceed recommended turntable speed of 30 r.p.m. Mis-shapen bales combined with excessive turntable speeds can be dangerous.
6. Care must be taken when tipping bales from machine on sloping ground and during subsequent handling to ensure that they do not roll, thus causing hazard.

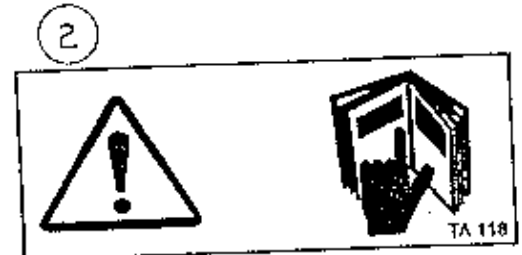
THINK OF YOUR PERSONAL SAFETY AND THAT OF OTHERS AT ALL TIMES.

SAFETY DECALS

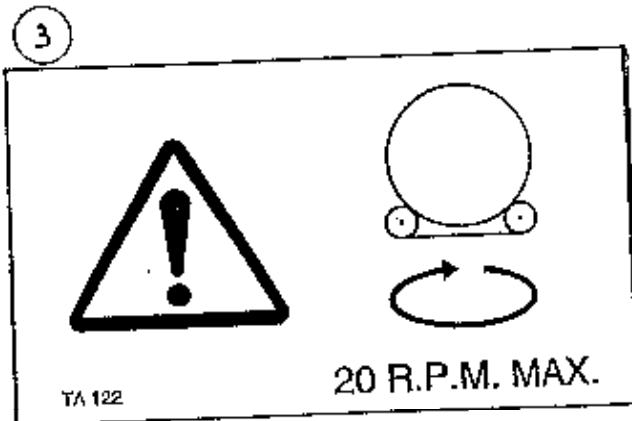
The following safety decals have been placed on your machine in the areas indicated. They are intended for your personal safety and for the safety of the people working with you. With this manual, walk around your machine and note the content and location of these warning signs. Review these decals and the operating instructions in the manual with your machine operators. Ensure that these decals are always legible. If they are not, replace them.



WARNING SHARP KNIFE



BEFORE STARTING THE MACHINE READ OPERATORS MANUAL AND SAFETY INSTRUCTIONS



DO NOT EXCEED TURNTABLE SPEED OF 20 R.P.M.



DANGER STAND CLEAR

PRE DELIVERY INSTRUCTIONS

IMPORTANT: DO NOT ATTEMPT TO OPERATE UNTIL THE FOLLOWING INSTRUCTIONS ARE PERFORMED OTHERWISE SERIOUS DAMAGE COULD BE CAUSED.

1. MACHINE ASSEMBLY

For ease of transportation some items are removed from their positions and stored elsewhere on the machine. The control box, film dispenser and cut and start unit are stored under the bale belt. Also stored under belt on remote control machines are the infra red receiver and sender units and warning beacon. The film mast is attached to the front of the machine. On round bale machines only, the top rollers c/w mounting brackets and the plastic end rollers are mounted on temporary brackets beside the bale belt. Road wheels, bale lift arm and bale ramp are transported separately. Remove the above items and assemble as detailed in parts list section of this manual taking particular note of the following points.

(i) DISPENSER MAST

Insert lift mast into socket towards front of machine. Ensure film pull down ram is faced towards the machine. Attach the pull down arm hydraulic ram. Attach the film dispenser to the mast ensuring that the end marked top is faced up. On remote control machines attach the infra-red receiver and warning beacon to top of mast. The film mast height is adjustable. Its height is dependant on bale size and type and is set in the field. It should be set so that centre line of film is in line with centre of bale. See Fig. 1

(ii) CUT & START

Attach Cut & Start unit to mounting frame on the left hand side of the machine. It is possible to move the unit along the mounting and fix it to any of three holes. On all round bale wrapping machines the unit is fixed to the centre hole on the mounting frame. Connect electrical supply to unit ensuring that wiring is secure. The cable is stored on the turntable frame near the Cut & Start mounting.

(iii) BALE LIFT ARM

Assemble bale lift arm and attach to mounting points on right hand side of main chassis. Attach hydraulic ram to lift arm; grease pivot pins.

(iv) TOP ROLLERS AND PLASTIC END ROLLERS

Place plastic end rollers in sockets on the back and front of the turntable. On round bale machines only, attach top rollers and mounting brackets to each side of the machine.

(v) ROAD WHEELS (trailed machines only)

Attach road wheels ensuring that nuts are tight and tyre pressure is 50 p.s.i.

(vi) BALE RAMP OR MAT

Attach bale ramp or mat to rear of chassis. Note Round bale trailed models have bale ramps with option hydraulic bale ramp. Linkage mounted machines have bale mats. A standard 1050 trailed models have hydraulic bale ramps.

SEE SEPERATE INSTRUCTION FOR FITTING HYDRAULIC BALE RAMP.

CHECKS TO BE PERFORMED

1. Check that all bolts and nuts are tight.
2. That all lubrication points are greased.
3. Check that all guards are in place.
4. Check all operating and safety stickers are in place.

TRANSPORT INSTRUCTIONS

1. Never use straps around the machine when lifting. Use only the following lifting points:- Tow hitch and two sockets on each side of main frame at rear for trailed models. 3pt. Linkage frame and two sockets on each side of main frame at rear for 3 pt. Linkage Model.
2. When the machine is towed on the road the Lifting Arm (if fitted) must be in the fully raised position, the safety prop fitted and the axle returned to narrowest position.
3. Raise the Parking Jack on trailed models before moving machine.

MACHINE IDENTIFICATION

The Serial Number plate is located on main frame forward of offside wheel on trailed models and on 3pt. Linkage frame for 3pt. Linkage model.

Always refer to this number when ordering parts. The Spare parts catalogue number and description should be used. The reference numbers are used to help identifying the spare part.

For your records write serial number here.

SERIAL NO. _____

PREPARATION OF A NEW MACHINE

1. Check height of film mast to ensure that centre line of film spool is level with the centre line of the bale on the turntable. This will alter with different bale diameters. If this alignment is not correct more film than necessary will be used. See fig 1.
2. When connected to John Deere* tractor the value must be converted to closed centre.

HYDRAULIC CONNECTIONS

Connect the feed and return hoses from the Autowrap valve to the tractors double acting facility.

NOTE: The return hose is fitted with a non-return valve to protect the Autowrap from damage in the event of incorrect connection to tractor hydraulics.

NOTE: To ensure maximum efficiency and length of lift of hydraulic components this machine requires a clean supply of hydraulic oil.
IT IS RECOMMENDED THAT THE TRACTOR HYDRAULIC FILTER ELEMENT TO BE REPLACED AND THEREAFTER MAINTAINED IN ACCORDANCE WITH THE MANUFACTURERS RECOMMENDATIONS.

AUTOMATIC BALE WRAP CONTROLLER (issue 110 onwards)

The control unit on the 1996 Autowrap allows full automated control of the bale wrapping sequence. The control unit is pre-programmed to automatically wrap the bale to the required number of rotations. Once complete, the turntable stops in the correct position to allow the film to be cut and held. Incorporated is also an inching override facility on the control unit to move the turntable, left or right, to ensure that the film is properly gathered. Once the turntable is lowered it rotates automatically back through 90 degrees to facilitate loading the next bale. For reasons of safety loading and tipping off of the bale is operator controlled using switches on the control unit.

The programming of the Automatic Bale Wrap Controller is easily done by following the steps outlined below.

Once the unit is switched on, the number of required turntable rotations appears on the right hand display. To change this press and hold the "Hold to Set" button, see fig 7., then press the "Set/Reset" button. The first digit of the number will then blink and count from 0-9. Release the "Set/Reset" button at the required number. By pressing the "Set/Reset" again the second digit can be changed.

The monitor counts the number of bales per batch and the cumulative total. To see these, press the "bale count" button. The first number to appear is the batch total. If the button is held down for 10 seconds, a line will appear on the display, followed by the cumulative number wrapped. The batch count can be reset to 0 by holding the "Bale Count" button down and pressing the "Set/Reset" once. The cumulative total cannot be returned to zero.

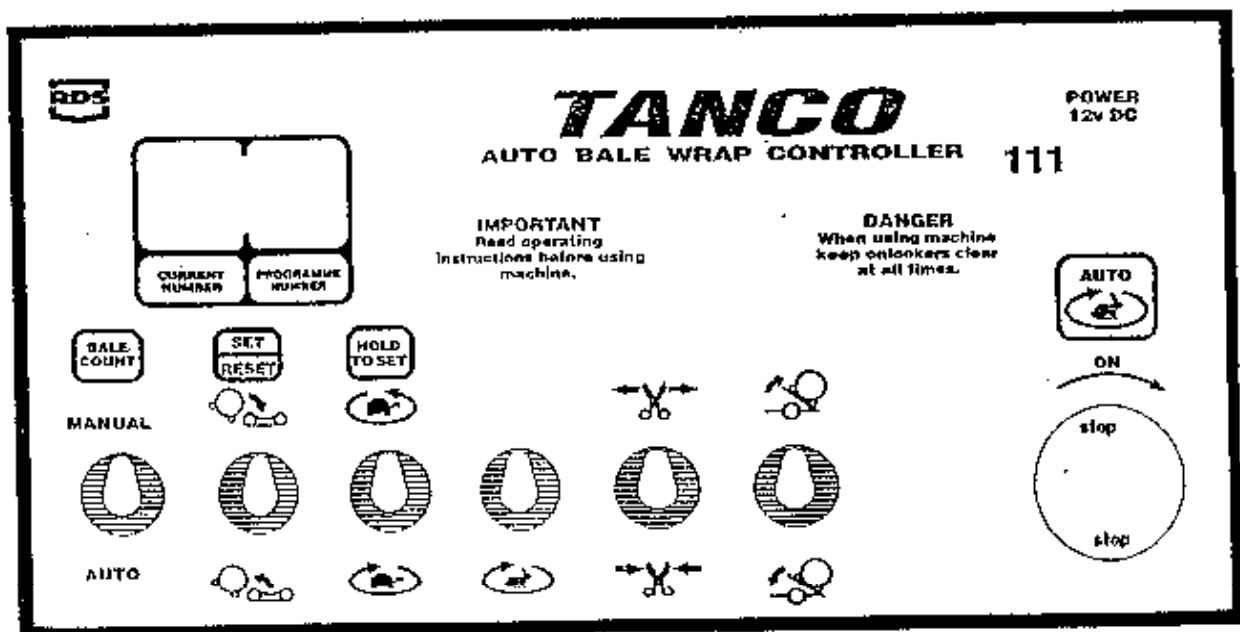
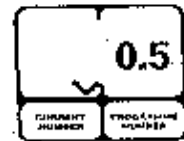


Fig. 7

Programme 3: Tip up to tip down delay
Display reading: 0.5



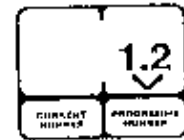
Function: Duration in seconds that the tipping ram remains fully extended between tip up and tip down.

Programme 4: Tip down.
Display reading: 4.8



Function: This controls the time required for the turntable to return to the horizontal position. Note: This value should be increased if the film pull down arm does not retract fully. Adjust in 0.2 increments.

Programme 5: Duration of slow rotation at end of wrapping cycle.
Display Reading: 1.2



Function: Shows time that elapses in seconds after turntable magnet passes rotate sensor on last rotation before turntable changes to slow mode. Note: This value need only be altered as follows.

- (i) To increase duration of slow rotation at end of wrapping cycle, reduce this value in 0.1 increments.
- (ii) To reduce duration of slow rotation at end of wrapping cycle, increase this value in 0.1 increments.

MODE OF OPERATION

Automatic Mode: with switch in "Auto" Position.

1. Ensure turntable is in correct position to accept bale and that film is gripped by the "Cut and Start".
2. Lower bale lift arm, drive alongside, pick up the bale and raise the lift arm.
3. Allow the bale to roll gently onto the turntable so that it is central between the end rollers.
4. Lower the arm clear of the turntable and press the "Auto" (Start) button commence wrapping. NOTE: The table must be in the correct position before the "Auto" (Start) button is pressed. If not the table may stop in the wrong position at the end of wrapping.
5. With the controller in Automatic Mode the turntable will start off for half of one rotation in "Slow Mode" before changing to "Fast Mode". During the final rotation it will change to "Slow Mode" and stop in the correct position so that the film is lined up above the open "Cut and Start".
NOTE: The turntable can be moved to left or right to align the "Cut and Start" by using the slow rotate switch on the controller or the buttons on the remote control unit.
6. On the third rotation of the wrap cycle the "Cut and Start" will open automatically. An indicator on the outside panel shows what stage the "Cut and Start" is at. On the ninth revolution the actuator will return to the "Park Position" indicating that the "Cut and Start" is ready to close. Note: The indicator must be at the "Park Position" in either Manual or Automatic Mode before the "Cut and Start" will close.
7. When in a safe position to do so, press the "Tip Up" button, the turntable will tip upwards gathering the film on the "Cut and Start" plunger whilst the pull down arm reduces the film to a rope which is cut as the "Cut and Start" snaps shut, releasing the bale but gripping the film end in readiness for the next bale.
8. The tip off sequence is automatic and once the turntable lowers it will reverse and stop in position to facilitate loading, if programmed to do so.

Manual Mode: with switch in "Manual" Position.

1. Load the bale as outlined above.
2. Using the slow rotation switch, start the wrapping cycle.
3. After half of a rotation, switch to the fast wrapping mode by pressing the appropriate switch.
4. During the wrapping extend the "Cut and Start" out to the end mark and return the indicator to the "Park Position".
5. At the end of the wrap cycle line up the "Cut and Start" with the film.
6. When safe to do so, tip up the turntable until all the film is gathered on the "Cut and Start". Operate switch to close position, the "Cut and Start" will snap shut cutting the film. Continue tipping until the bale rolls off then lower the turntable.
7. Position the turntable to load the next bale.

Operating Instructions

1. Fit roll of film and thread through the Dispenser roller assembly by following the instruction label on the film mast.
2. Set the bale wrap indicator to the correct setting for the size of bale being wrapped and the width of film being used. See Table 1 for list of some recommended settings.
3. Power down Lift Arm until wheel is clear of ground and adjust wheel outward to appropriate setting for bale weight.
4. Adjust tractor engine speed to give turntable speed of 16 - 25 r.p.m. **NOTE:** Speeds in excess of 25 r.p.m. will void Warranty.
5. Position turntable with cut and start unit facing front of machine.
6. Attach film tag end to gripper section of cut and start unit.
7. Rotate turntable anticlockwise through 90 degrees and stop turntable with cut and start unit opposite to lift arm.
8. Locate bale on lift arm, see loading sequence, then raise lift arm and gently roll bale onto turntable. Lower arm.
9. Start wrapping, turntable rotating clockwise. Film tension is automatically set so that width of film applied to the bale stays at a approx width of 400mm for 500mm wide film roll and 600mm for 750mm wide film roll.
10. Continue wrapping until signal from bale indicator sounds (required number of revolutions has been reached). Then stop with cut and start facing towards front of machine and film aligned with gripper section of cut and start unit.
11. Tip bale from machine. When the machine is almost fully tipped the cut and start unit grips and cuts the film and the bale is then unloaded down the bale ramp.
12. Lower the turntable and rotate anticlockwise through 90 degrees and stop with cut and start unit opposite to lift arm.
13. Repeat operations 7 - 12 as required.

NOTE: The film end need only be attached at the start of a roll, after that the sequence is automatic.

WRAPPING SEQUENCE FOR A/W 1260 WITH CLAAS QUADRANT BALES

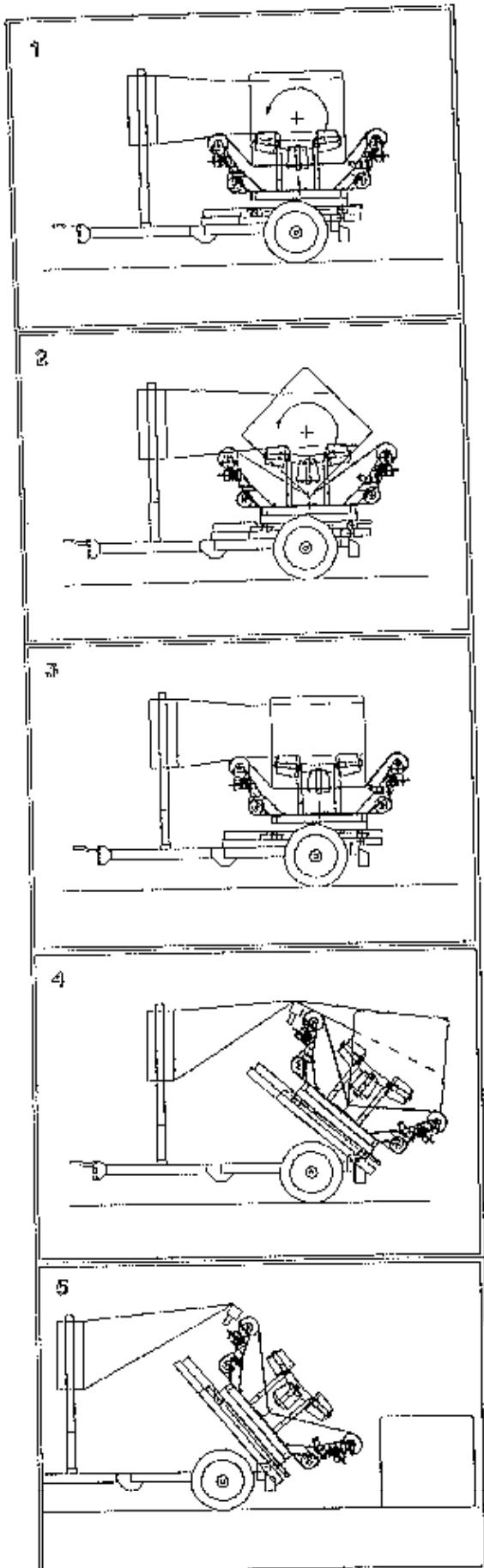


FIG. 1.

WITH THE FILM END SECURELY GRIPPED BY THE GRIPPER OF THE CUT & START AND WITH THE TURNTABLE ROTATING CLOCKWISE, FILM IS DRAWN THROUGH THE AUTOMATIC PRE STRETCHER BY THE BALE, WHICH ITSELF TURNS A GIVEN DISTANCE PER TURNTABLE REVOLUTION, CONTINUALLY PRESENTING FRESH PORTIONS OF THE BALE TO BE COVERED BY THE FILM.

FIG. 2 & 3.

THE BALE CLIMBS UP THE TOP ROLLER PAST THE POINT OF BALANCE THEN TIPS OVER ONTO THE TOP ROLLER OPPOSITE AND KEEPS MOVING IN THIS MANNER FOR THE RECOMMENDED 18 REVOLUTIONS AT WHICH POINT IDEALLY THE EDGE OF BALE WILL BE RESTING FLAT ON BALE BELT AS SHOWN IN FIG. 3. THE TURNTABLE STOPS WITH OPEN CUT AND START LINED UP UNDER THE FILM.

FIG. 4.

THE TURNTABLE IS TIPPED, AND THE FILM IS GATHERED UP BY THE EXTENDED CUT & START ROD.

FIG. 5.

WHEN THE FILM IS FULLY GATHERED, THE CUT & START SNAPS CLOSED, GRIPPING THE FILM FOR THE NEXT BALE AND ALSO CUTTING THE FILM TO RELEASE THE BALE TO TIP OVER THE DRIVE ROLLER WHICH PIVOT DOWN ALLOWING THE BALE TO ROLL OFF AND ONTO THE HYDRAULIC BALE RAMP.

SERVICE AND MAINTENANCE

1. All nuts and bolts should be tightened after some hours in use and thereafter regularly.
2. Wheel pressure should be normally kept at 42 psi depending on bale weight and field conditions.
3. Inspect moving parts for wear on daily basis.
4. Lubrication.

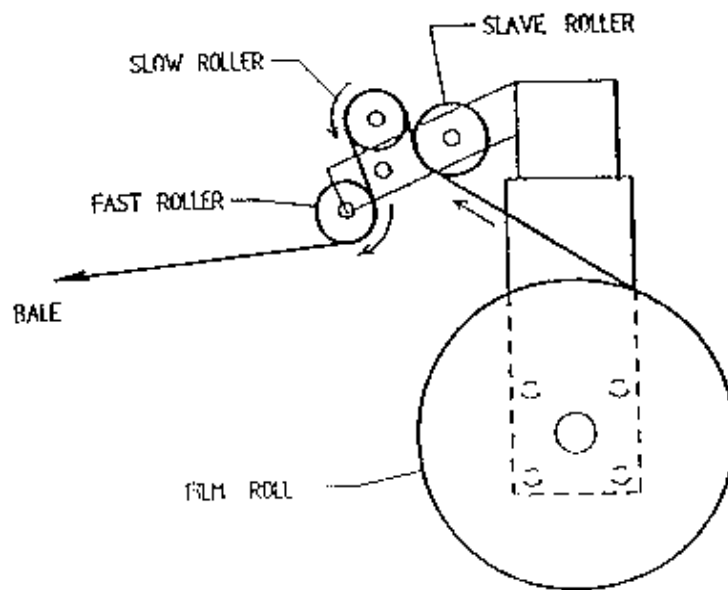
Drive chain & sprocket	-	grease every 24 hours.
End rollers	-	grease every 24 hours.
Main rollers	-	grease every 24 hours.
Hinge pins on Lift arm	-	grease every 24 hours.
Hinge pins on main tip frame	-	grease every 24 hours.
Hydraulic rams	-	grease every 24 hours.
Wheel bearings	-	grease every 24 hours.
Film reel assy.	-	grease sparingly each month.
Dispenser gearboxes	-	grease sparingly each month.
Main spindle	-	grease every 4000-5000 bales.
Gearbox oil level	-	Check every 4000-5000 bales.
5. Adjustments

Turntable Drive chain	:	Adjust after first days work then check/adjust every 50 hours. See Fig. 8.
Gearbox Drive chain	:	Adjust after first days work then check/adjust every 50 hours. See Fig 2.
Roller Drive chain	:	Adjust after first days work then check/adjust every 50 hours See Fig 3.
Main Bale Belt	:	See belt tracking instruction.
6. Film Dispenser

Fit with marked gearbox at top.
Apply one shot of EPO type Grease
Wash rollers often to avoid build up of Tack from film using petrol.
Follow Film threading diagram. See Fig 1.
7. Film Adjustment

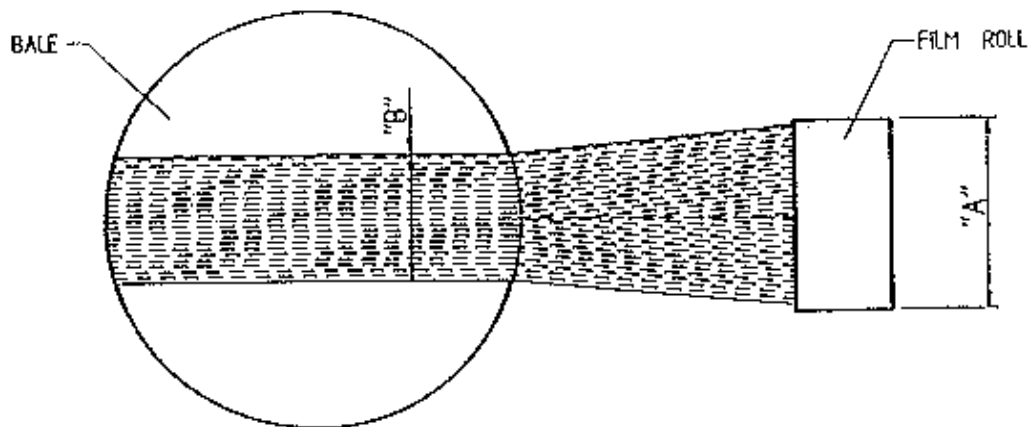
Centre of film roll must be in line with centre of bale and film mast should be vertical.

TANCO AUTOWRAP FILM THREADING DIAGRAM



FILM ADJUSTMENT

CENTRE OF FILM ROLL MUST BE IN LINE WITH CENTRE OF BALE AND FILM MAST SHOULD BE VERTICAL.



FILM ROLL WIDTH "A"	FILM WIDTH ON END OF BALE "B"
500 mm	400 mm
750 mm	600 mm

Fig. 1

FILE NAME W068-LA21

TANCO AUTOWRAP 1996 MODEL TURNABLE CHAIN DRIVE TENSIONING SYSTEM

TENSIONING PROCEDURE

1. TIP UP MACHINE AND SUPPORT WITH A PROP.
2. REMOVE CHAIN GUARD.
3. SLACKEN M12 CLAMPING BOLTS SLIGHTLY.
4. SLACKEN LOCKNUT A.
5. ADJUST NUT B UNTIL THERE IS 8mm - 10mm DEFLECTION ON CHAIN.

NOTE WARNING:
DO NOT OVER TENSION CHAIN AS MOTOR WILL BE DAMAGED

5. TIGHTEN LOCKNUT A.
7. TIGHTEN M12 CLAMPING BOLTS.
8. REFI CHAIN GUARD.

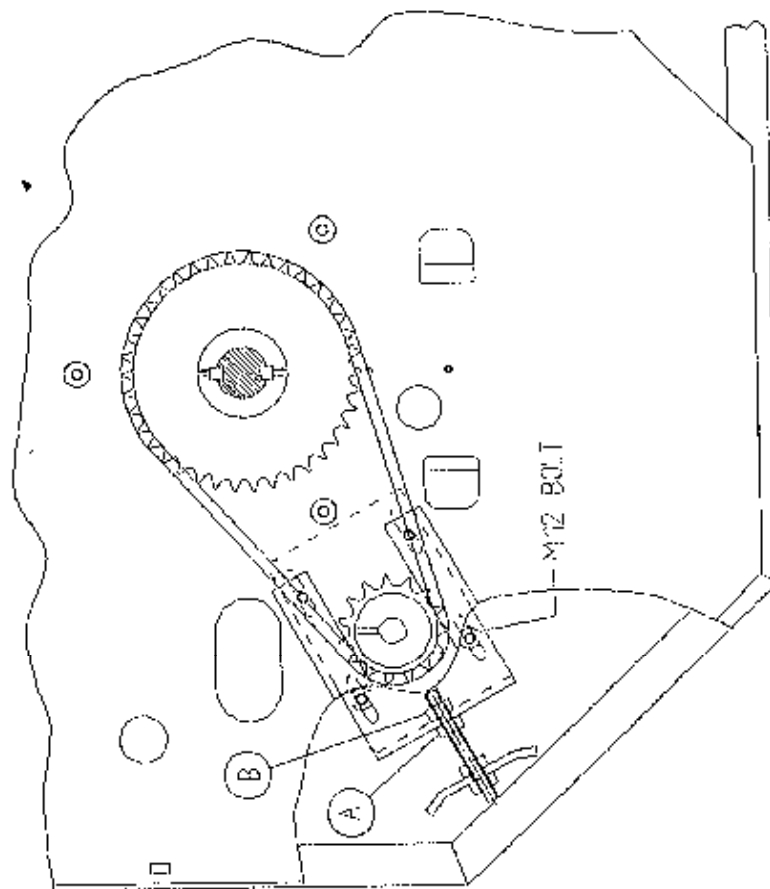
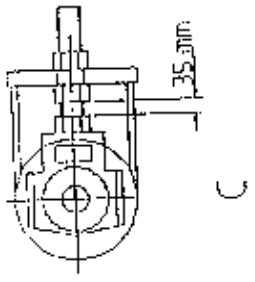
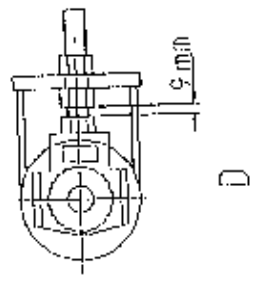


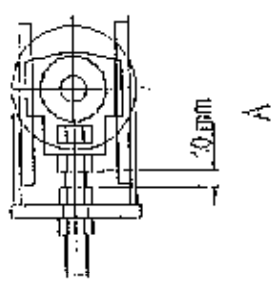
Fig. 8



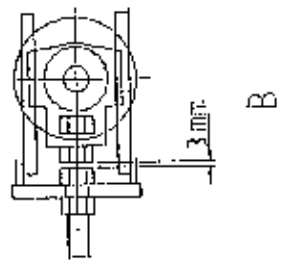
C



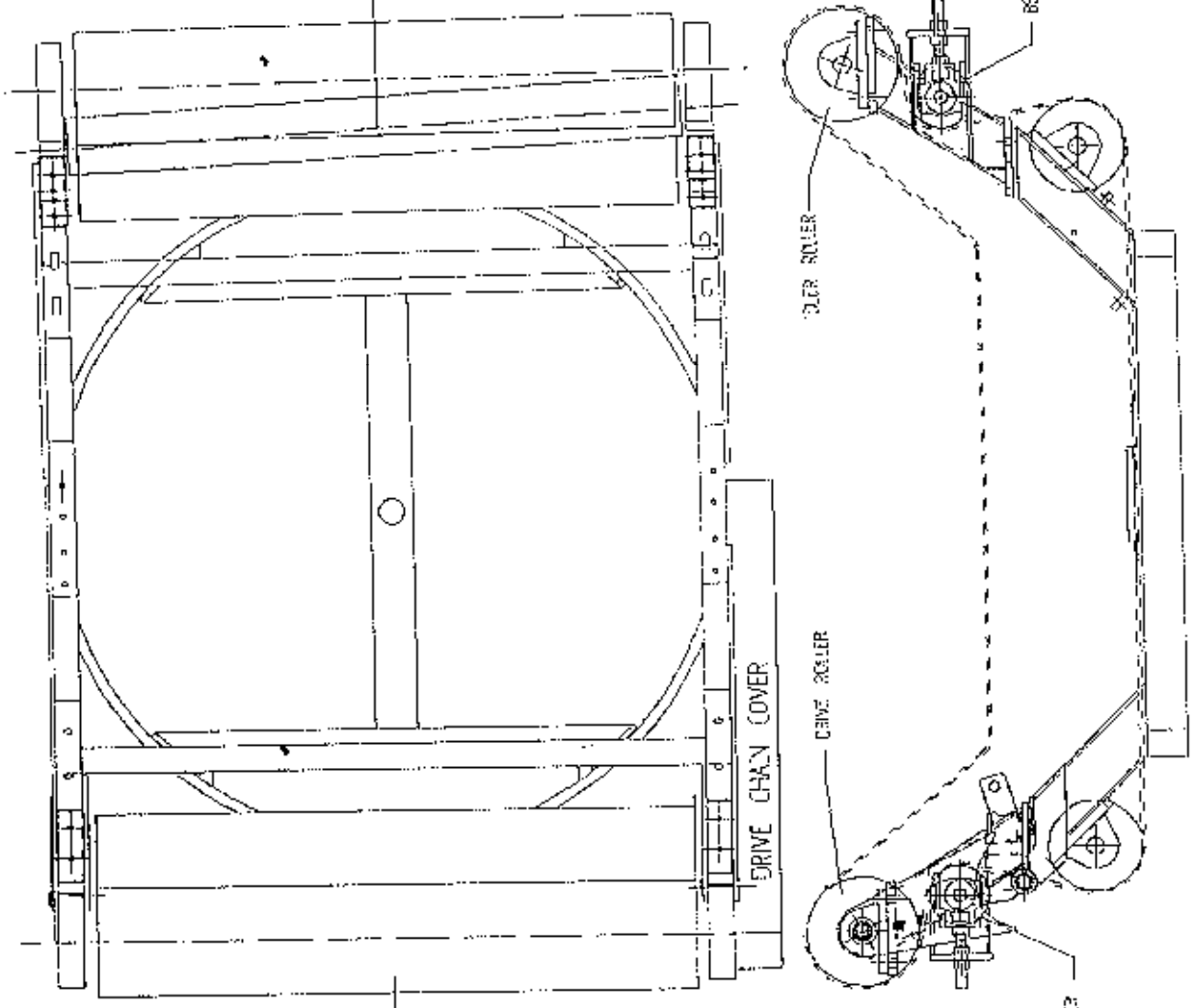
D



A



B



CA OF TRACKING ROLLER

DRIVE CHAIN COVER

DRIVE ROLLER

ROLLER ROLLER

DRIVE ROLLER

BELT TRACKING ROLLER

BELT ADJUSTER ROLLER

1

2

B.T.2

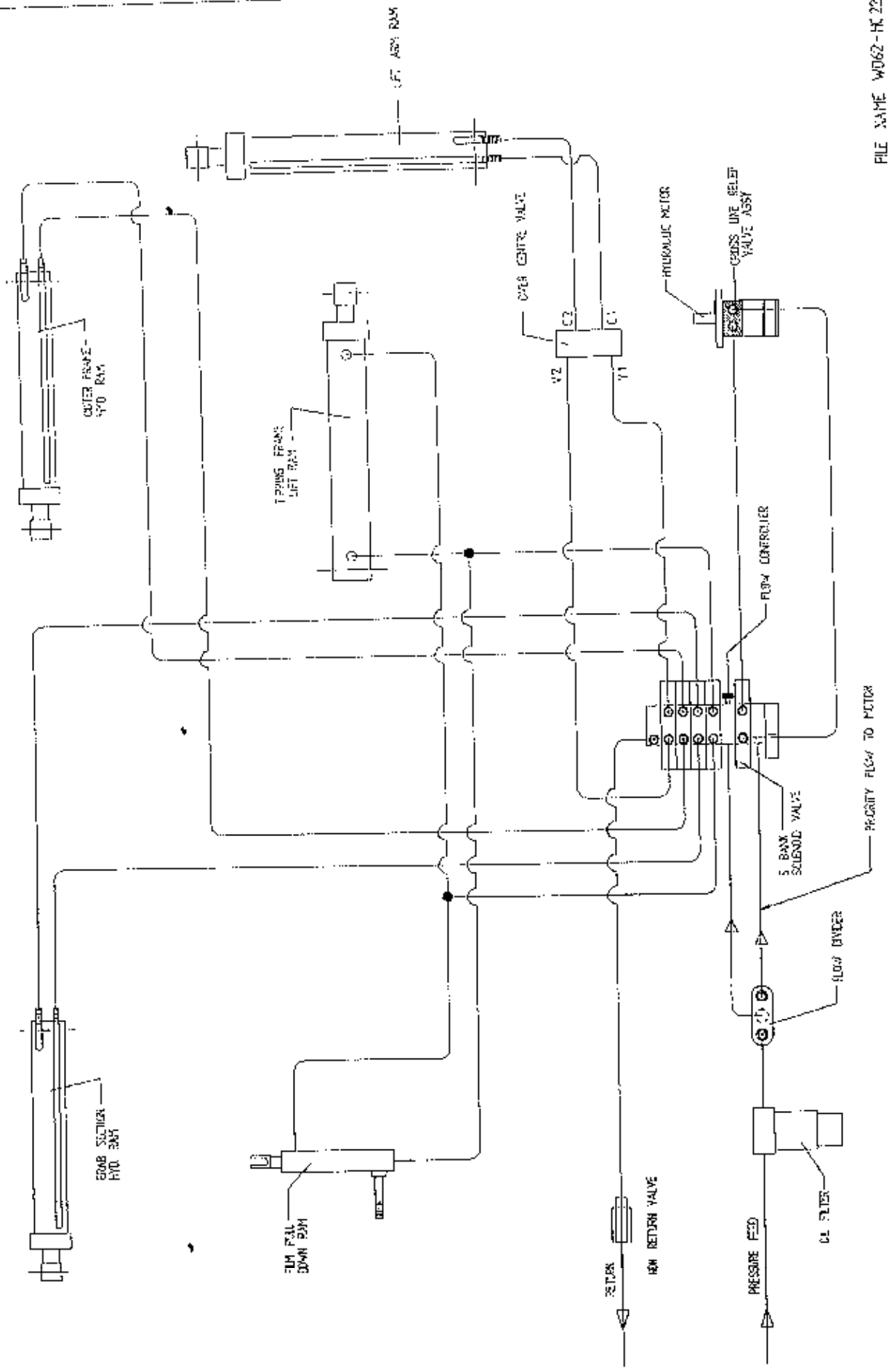
1260 MODEL

FILE NAME 9228B

TANCO AUTOWRAP 1260A MODELELECTRICAL COMPONENTSPARTS LIST

ITEM NO	DESCRIPTION	QTY	PART-NO.
1.	CONTROL BOX	1	D606
2.	JUNCTION BOX (5 BANK VALVE)	1	ZDG-JB5
3.	ADDITIONAL CONTROL BOX FOR 1250A MODEL	1	ZDG-RCB
4.	LEAD FOR ADDITIONAL CONTROL BOX C/W HEARTING PLUG.	1	ZDG-CB
5.	WARNER LINEAR ACTUATOR	1	ZD605-510
6.	LIFT ARM SENSOR	1	ZD606-LAS
7.	ADDITIONAL LOOM FOR VALVE C/W HIRSCHMANN FOR 1250A	1	ZD606-010
8.	SLIP RING ASSY	1	ZD605-308
9.	BRUSHES	1	ZD606-302
10.	7 CORE CABLE C/W HEARTING PLUG	1	D605-7C
11.	24 CORE INTER CONNECTING LEAD C/W CONNECTORS	1	D605-24C
12.	SYSTEM PRESSURE LEAD	1	ZD605-070
13.	ROTATING SENSOR	1	ZD606-RS
14.	TIP SENSOR	1	ZD606-TS
15.	TWO CORE CABLE FOR SLIP RING	1	D605-02C
16.	MAIN BATTERY LEAD	2	ZD606-030
17.	IN-LINE FUSE	4	ZD606-100
18.	MAIN LEAD FOR JUNCTION BOX	1	ZD606-050
19.	LOOM FOR VALVE C/W HIRSCHMAN	1	ZD606-081

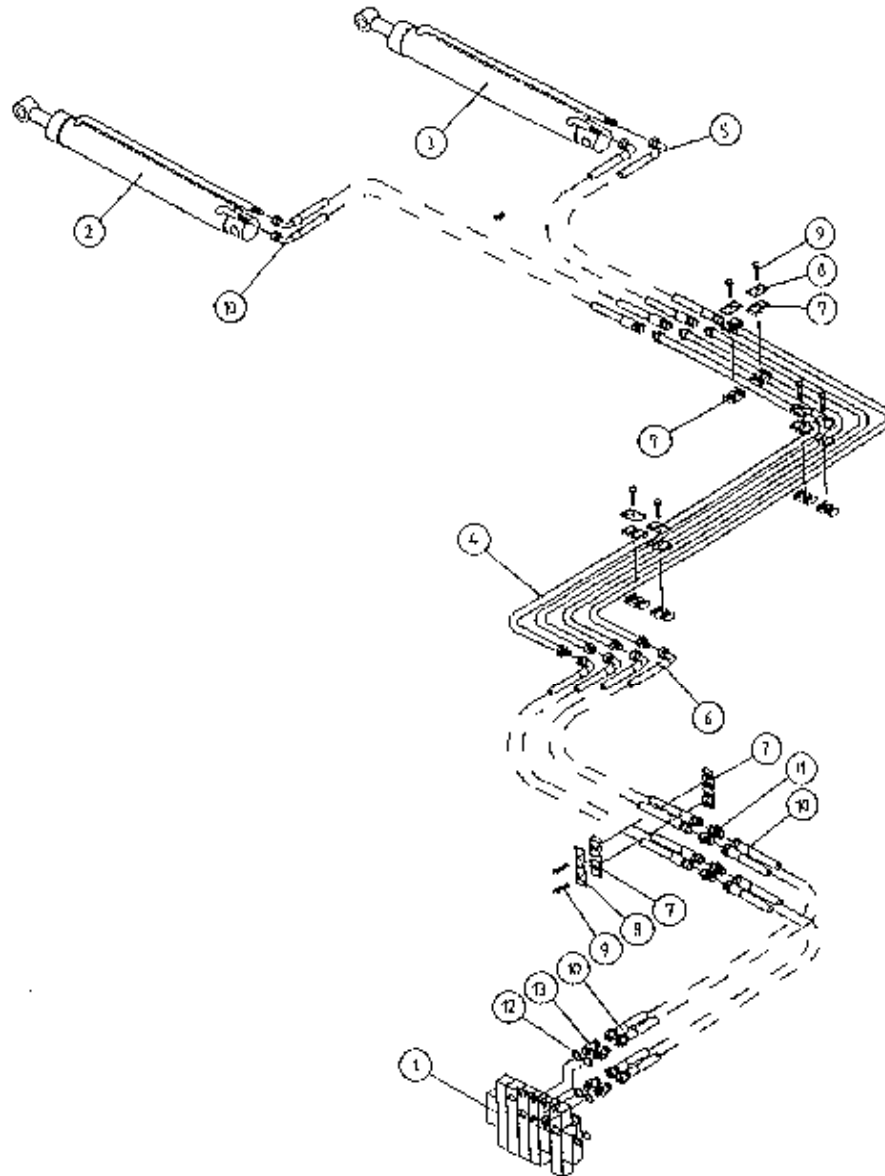
TANCO AUTOWRAP 1260 A MODEL HYDRAULIC CIRCUIT DIAGRAM



TANCO AUTOWRAP 1260A MODEL (1996)"TWIN-PAK" HYDRAULIC COMPONENTSPARTS LIST

ITEM NO.	DESCRIPTION	QTY	PART-NO.
1.	5 BANK SOLENOID VALVE	1	Z01-03-10-A5
2.	HYDRAULIC MOTOR C.L.	1	Z01-02-RF200
3.	CROSS LINE RELIEF VALVE	1	Z01-03-004
4.	1/2" B.S.P. BOTTOM BANJO BOLT (SPECIAL)	2	Z01-03-002B
5.	HYDRULIC RAM (TIPPING FRAME)	1	Z01-01-AR687
6.	1/2" DOWTY WASHER	13	Z01-04-03
7.	1/2" NON RETURN VALVE	1	Z01-03-017
8.	1/2" x 3/8" ADAPTOR	5	Z01-06-06-08
9.	1/2" x 1/2" ADAPTOR	7	Z01-06-08-08
10.	1/2" MALE END Q/R COUPLING	2	Z01-15-081
11.	HYD. RAM (FOR LIFT ARM)	1	Z01-01-AW
12.	108" ST/90 3/8" D/W HOSE	3	Z38-R2-108-S
13.	72" ST/90 3/8" D/W HOSE	3	Z38-R2-72-S9
14.	84" ST/90 3/8" D/W HOSE	1	Z38-R2-84-S9
15.	24" ST/90 1/2" D/W HOSE	1	Z12-R2-24-S9
16.	34" ST/90 1/2" D/W HOSE	1	Z12-R2-34-S9
17.	12" ST/ST 3/8" D/W HOSE	2	Z38-R2-12-SS
18.	9" ST/ST 3/8" D/W HOSE	1	Z38-R2-9-SS
19.	48" ST/90 3/8" D/W HOSE	1	Z38-R2-48-S9
20.	FILTER	1	Z01-24-08
21.	3/8" x 3/8" ADAPTOR FITTED WITH 0.05" RESTRICTOR.	1	Z01-03-40
22.	1/2" MALE x 1/2" MALE x 1/2" FEMALE "T" PIECE	1	Z01-12-003
23.	108" ST/90 1/2" D/W HOSE	1	Z12-R2-108-S
24.	HYD. RAM D/A (PULL DOWN ARM)	1	Z01-01-AW25
25.	1/4" DOWTY WASHER	1	Z01-04-01
26.	1/4" x 3/8" ADAPTOR	1	Z01-06-04-06
27.	1/2" FEMALE x 1/2" FEMALE 90 ELBOW	1	Z01-14-018
28.	3/8" MALE/FEMALE 90 ELBOW	2	Z01-14-015
29.	IN LINE FLOW DIVIDER	1	Z01-03-10-A6
30.	3/8" DOWTY WASHER	11	Z01-04-02
31.	3/8" x 3/8" ADAPTOR	10	Z01-06-06-06
32.	3/8" MALE x 3/8" MALE x 3/8" FEMALE "T" PIECE	2	Z01-12-002
33.	OVER CENTRE VALVE	1	Z01-03-10-A8
34.	30" ST/90 3/8" D/W HOSE	2	Z38-R2-30-S9
35.	COPPER WASHER	2	Z01-04-15

TANCO AUTOWRAP 1260A MODEL 1996
LIFT ARM HYDRAULIC COMPONENTS



PARTS LIST

ITEM NO.	DESCRIPTION	QTY	PART-NO
1.	5 BANK SOLENOID VALVE	1	Z01-03-01-A5
2.	HYDRAULIC RAM D/A	1	Z01-01-140
3.	HYDRAULIC RAM D/A	1	Z01-01-140S
4.	HYDRAULIC PIPE (LIFT ARM)	4	WD625-HP
5.	12" ST/90 3/8" D/W HOSE	2	Z38-R2-12-S9
6.	36" ST/90 3/8" D/W HOSE	4	Z38-R2-36-S9
7.	PIPE CLAMP TOP/BOTTOM (DOUBLE)	8	Z01-24-26
8.	TOP CLAMPING PLATE	8	Z01-24-28
9.	M8 HEX HD BOLT X 35MM LONG	8	Z26-042B
10.	48" ST/90 3/8" D/W HOSE	6	Z38-R2-48-S9
11.	3/8" X 3/8" ADAPTOR	4	Z01-06-06-06
12.	1/2" DOWTY WASHER	4	Z01-04-03
13.	1/2" X 3/8" ADAPTOR	4	Z01-06-06-08

TANCO AUTOWRAP 1260 MODELS 1996
CONSTANT INDEXING DRIVE ASSEMBLY

PARTS LIST

ITEM NO.	DESCRIPTION	QTY	PART-NO.
1	TURNTABLE ASSY.	1	WD610-TA2
2	TIPPING FRAME ASSY.	1	WD64-TF
3	DRIVE ROLLER ASSY.	1	WD610-RRD1
4	GEAR BOX	1	Z01-25-300
5	M12 HEX HD SET x 30mm LONG	4	Z26-082S
6	12mm DIA SPRING WASHER	7	Z12-02-12
7	CHAIN TENSIONER	2	WD60-CT
8	CENTRM SPROCKET ASSY 27 TOOTH	1	WD64-CSA
9	M12 HEX HD SET x 25mm LONG	3	Z26-081S
10	46 TOOTH SPROCKET	1	Z06-D64-46S
11	M10 HEX HD SET x 25mm LONG	1	Z26-0611S
12	10mm DIA SPRING WASHER	9	Z12-02-10
13	RETAINING COLLAR	3	WD623-071
14	CHAIN 3/4" PITCH x 87 PITCHES	1	Z09-AW-5
15	ROSTA TENSIONING UNIT ARM	1	Z06-454
16	SPROCKET	1	Z06-D610-1620
17	M10 HEX HD BOLT x 65mm LONG	1	Z26-0671B
18	SPROCKET	1	Z06-D610-20K
19	M10 LOCKNUT	1	Z23-10
20	CHAIN 3/4" PITCH x 54 PITCHES	1	Z09-AW-53
21	CHAIN 3/4" PITCH x 98 PITCHES	1	Z09-AW-54
22	CHAIN STRIPPER	1	WD610-185
23	SPACER	2	WD610-207
24	10mm DIA FLAT WASHER	6	Z10-02-10
25	M10 HEX HD SET x 30mm LONG	3	Z26-062S
26	KEY 12mm x 10mm x 55mm LONG	1	WD610-198
27	M10 CUP SQ. SCREW x 30mm LONG	1	Z13-112
28	M10 HEX HD BOLT x 80mm LONG	1	Z26-0691B
29	CHAIN GUARD (SMALL)	1	WD612-CGS1
30	CHAIN GUARD (LARGK)	1	WD610-CGL1
31	M10 HEX HD SET X 25MM LONG (TUFLOCK)	3	Z26-061S
32	SPROCKET/BRACKET PIVOT SHAFT	1	WD610-71
33	1" DIA UNC LOCKNUT	1	Z23-251
34	1" H/D FLAT WASHER	2	Z10-02-25
35	LOCKING PLATE	2	WD623-060
36	CHAIN GUIDE	2	WD610-199
37	SPROCKET	1	Z06-D65-1316S
38	M6 GRUB SCREW	2	Z28-006
39	CHAIN TENSIONER BRACKET	1	WD610-CTR1
40	CHAIN TENSIONER BLOCK ASSY INNER	1	WD610-TB11
41	CHAIN TENSIONER BLOCK ASSY OUTER	1	WD610-TB01
42	SPRING 14.5MM O.D. X 1.6MM WIRE X 60MM LONG	1	Z07-48
43	M10 HEX HD SET X 40MM LONG	1	Z26-064S
44	OILITE BUSH	2	Z06-106
45	GUARD	1	WD64-021
46	GUARD	1	WD64-020
47	M8 HEX HD SETS x 20mm LONG	6	Z26-020S
48	8mm DIA SPRING WASHER	6	Z12-02-08
49*	MAGNET	2	D6043
50*	M6 CSK HD SET x 35mm LONG	2	Z13-132
51*	5mm DIA FLAT WASHER	2	Z11-02-06
52*	M6 LOCKNUT	2	Z23-06
53	SPIRAL PIN	2	Z03-23-062

* DENOTE ADDITIONAL ITEMS REQUIRED FOR AUTOMATIC MACHINES

TANCO AUTOMRAP 1260S/1260A MODELS (TRAILER) 1996
PARTS LIST

ITEM	DESCRIPTION	QTY	PART-NO.
1.	CHASIS ASSY	1	WD66-CJA
2.	STUR AXLE (LONG)	1	Z04-033
3.	WHEELS	2	Z04-03
4.	WHEELS NUTS	10	M22AWNA
5.	RISSEL PIN	1	WD60-861
6.	M10 HEX NUT	3	Z18-10
7.	HYD. RAM	1	Z01-01-AR687
8.	RAM. BOTTOM PIVOT PIN	1	Z03-02-330
9.	RAM TOP PIVOT PIN	1	Z03-03-50
10.	2" X 1/4" SPLIT PIN	2	Z03-21-29
11.	TIPPING FRAME ASSY	1	WD64-TF
12.	TIPPING FRAME PIVOT PIN C/W GREASE NIPPLE	2	Z03-01-905
13.	BELT GUIDE ASSEMBLY	2	WD612-BG1
15.	12mm DIA SPRING WASHER	2	Z12-02-12
16.	SCREW JACK ASSEMBLY	1	WD60-JA
17.	M8 HEX HD SETS X 20MM LONG	4	Z26-039S
18.	M8 HEX NUTS	8	Z18-08
19.	8MM DIA FLAT WASHERS (MUD FLAP)	12	Z11-02-081
20.	8MM DIA SPRING WASHERS	12	Z12-02-08
21.	SCRAPER	2	WD60-711
22.	STUB AXLE (SHORT)	1	Z04-032
23.	4MM "R" CLIP	1	Z36-02
24.	RING HITCH ASSY (LONG)	1	WD65-HIT
25.	M16 HEX HD SET X 50MM LONG	4	Z26-124S
26.	M16 LOCKNUTS	4	Z23-16
27.	M10 HEX HD SET X 20mm LONG (TUFLOCK)	2	Z26-060ST
28.	10MM DIA MACHINED FLAT WASHER	2	Z11-02-10
29.	TURN TABLE ASSY	1	WD610-TA2
30.	10mm DIA SPRING WASHER	5	Z12-02-10
31.	SUPPORT WHEELS (4" DIA)	4	Z06-466
32.	AXLE ASSY C/W GREASE NIPPLE	4	Z03-22-AW/AX
33.	M20 LOCKNUTS	4	Z23-20
34.	TURN TABLE COVER PLATE	1	WD625-109
35.	SPACER	8	WD60-198
36.	M12 HEX HD SET x 30mm LONG	2	Z26-082S
37.	FILM TRANSPORT BRACKET	1	WD60-FTB1
38.	CLAMPING PLATE	1	WD60-933
39.	M10 HEX HD BOLT x 140mm LONG	3	Z26-0726B
40.	PLASTIC CAP	2	Z32-08
41.	M10 HEX HD BOLT x 80mm LONG	1	Z26-0691B
42.	M10 LOCKNUT	1	Z23-10

TANCO AUTOWRAP 1996 MODEL
TURNTABLE CHAIN DRIVE ASSEMBLY

PARTS LIST

ITEM NO	DESCRIPTION	QTY	PART NO
1	TIPPING FRAME ASSY	1	WD64-TF
2	38 TOOTH x 1" PITCH SPROCKET	1	Z06-D64-38
3	CHAIN 1" PITCH x 54 PITCHES	1	Z09-AW6
4	SPINDLE SPACER	1	WD64-040
5	KEY 5/8" SQ x 50mm LONG	2	WD64-052
6	15 TOOTH x 1" PITCH SPROCKET	1	Z06-I60-046
7	KEY 5/16" SQ x 45mm LONG	1	WD64-053
8	LOCKING COLLAR	1	WD623-071
9	10mm DIA SPRING WASHER	1	Z12-02-10
10	3/8" UNC HEX HD SET x 1" LONG	1	Z27-023S
11	2" DIA FLANGE BEARING C/W CAM LOCK COLLAR	1	Z06-49EC
12	5/8" UNF HEX HD SET x 2" LONG	4	Z31B-064
13	5/8" UNF LOCKNUT	4	Z20-10
14	HYDRAULIC MOTOR	1	Z01-02-RF200
15	HYDRAULIC MOTOR MOUNTING PLATE	1	WD64-001
16	M12 x 50mm ALLEN HD C/S SCREW	4	Z13-5-12X50
17	M12 HEX HD SET x 30mm LONG	4	Z26-082S
18	12mm DIA SPRING WASHER	6	Z12-02-12
19	12mm DIA FLAT WASHER	6	Z10-02-12
20	M16 THREADED BAR x 150mm LONG	1	WD64-038
21	M16 HEX NUTS	4	Z18-16
22	SPACER	1	WI60-093
23	M12 LOCKNUTS	4	Z23-12
24	M12 HEX HD SET x 50mm LONG	2	Z26-086S
25	DRIVE CHAIN GUARD	1	WD66-DCG
26	M12 HEX NUT	2	Z18-12
27	M6 HEX NUT	1	Z18-06
28	M6 90 DEGREE GREASE NIPPLE	1	Z39-65
29	M12 GRUB SCREW x 16mm LONG	2	Z28-012

**TANCO AUTOWRAP 1260 MODEL 1996
BALE BELT ROLLER MOUNTING BRACKETS**

PARTS LIST

ITEM NO	DESCRIPTION	QTY	PART-NO
1.	TURNTABLE ASSY	1	WD610-TA2
2.	ROLLER MOUNTING BRACKET (SWIVEL)	1	WD612-RMS1
3.	ROLLER MOUNTING BRACKET (FIXED)	1	WD612-RM1
4.	ROLLER MOUNTING BRACKET (FIXED)	1	WD612-RM2
5.	5/16" DIA x 45mm LONG TENSION PIN	1	Z03-20-022
6.	M14 HEX HD SET x 50mm LONG	8	Z26-104S
7.	BIG ROLLER ASSY (DRIVE)	1	WD610-BRD1
8.	BIG ROLLER ASSY (IDLER)	1	WD610-BRI
9.	ROLLER ASSY (IDLER)	2	WD65-BRI
10.	TRACKING ROLLER ASSY (SHORT)	2	WD610-TRS
11.	1 1/4" PILLOW BLOCK BEARING	6	Z06-485
12.	M14 HEX HD SET x 45mm LONG	8	Z26-103S
13.	14mm DIA FLAT WASHER	16	Z11-02-14
14.	14mm DI SPRING WASHER	16	Z12-02-14
15.	SLIDING BEARING ST1	4	Z06-47ST
16.	M20 THREADED BAR x 135mm LONG	4	WD610-77
17.	M20 HEX NUTS	16	Z18-20
18.	BALE BELT 1000mm x 5150mm LONG	1	Z05-02AWV2-91
19.	CUT AND START MOUNTING FRAME	1	WD612-CSM
20.	M12 HEX HD SET x 25mm LONG	4	Z26-081S
21.	1" DIA UNC LOCKNUT	1	Z23-251
22.	1" H/D FLAT WASHER	2	Z10-02-25
23.	SWIVEL BRACKET PIVOT PIN J-50	1	Z03-03-50
24.	2" x 1/4" SPLIT PIN	1	Z03-21-29
25.	12mm DIA SPRING WASHER	4	Z12-02-12
26.	SPRING ANCHOR BRACKET	1	WD612-SAB1
27.	ROLLER MOUNTING SWIVEL TENSION SPRING	1	Z07-21
28.	M12 HEX HD SETS x 30mm LONG	2	Z26-082S
29.	40mm PILLOW BLOCK BEARING	2	Z06-48FC-40

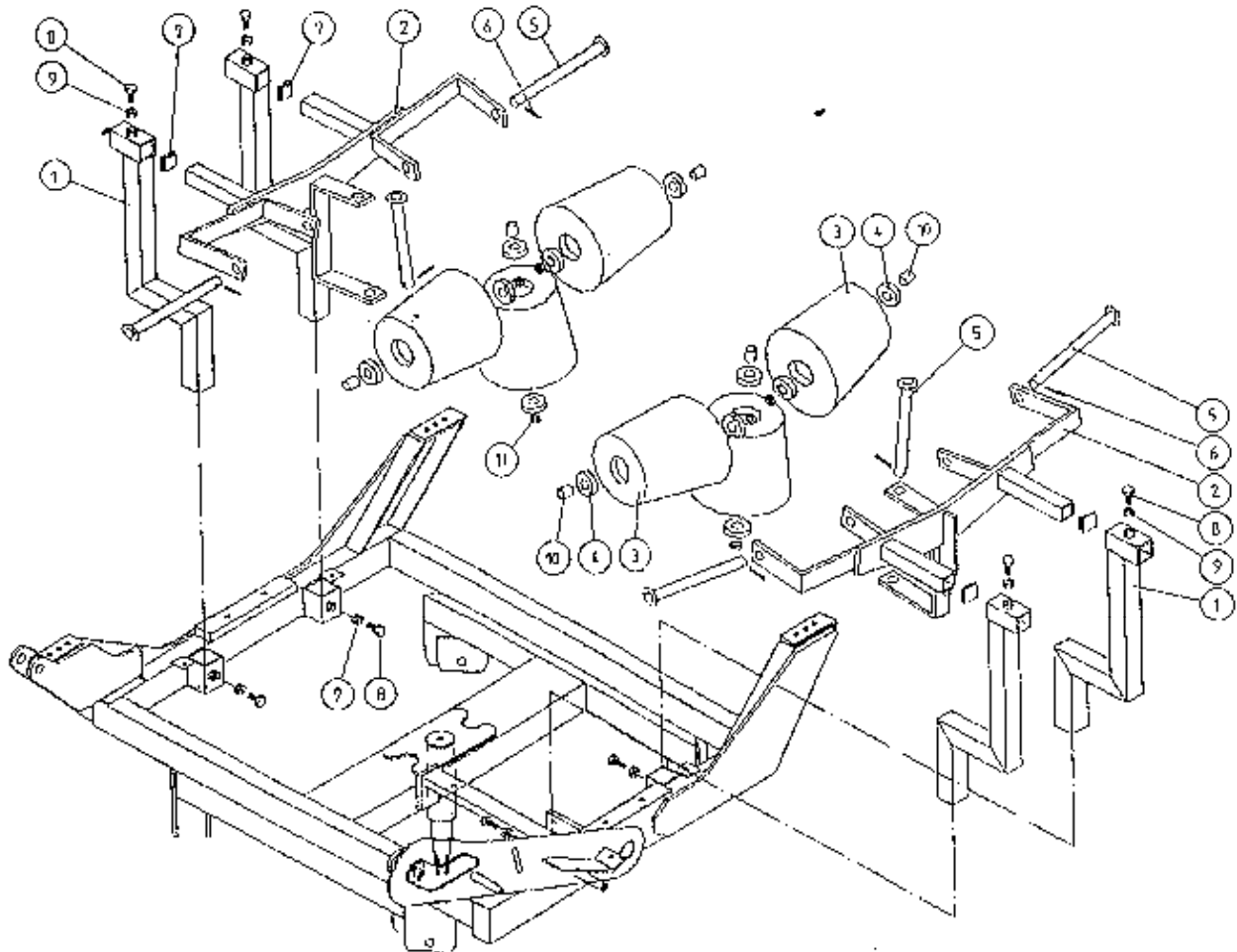
TANCO AUTOWRAP 1260S/1260A MODELS 1996
FILM DISPENSING SYSTEM

PARTS LIST

ITEM NO.	DESCRIPTION	QTY	PART-NO.
1.	M10 LOCKNUTS	4	Z23-10
2.	PLASTIC CAPS (TO SUIT 40 x 40 x 3 RHS)	2	Z32-07
3.	DISPENSER MOUNTING (UPPER)	1	WD60-DMUH
4.	FILM SPOOL ASSEMBLY	1	WD60-SPO
5.	1" DIA FLANGE BEARING C/W CAM LOCK	1	Z06-48EC
6.	M10 HEX HD BOLT x 50mm LONG	4	Z26-066B
7.	CONE (TOP) C/W BALL BEARINGS	1	Z06-45-01
8.	CLAMP ASSEMBLY	1	WD60-DMCA
9.	LEVER ASSEMBLY	1	WD60-DMLA
10.	LINK ASSEMBLY	1	WD60-DMJK
11.	FILM DISPENSER UNIT MK 9 (70% STRETCH)	1	D616
12.	SLAVE ROLLER LONG	1	Z06-SR95-L
13.	SLAVE ROLLER PIVOT	2	WD64-SRP
14.	M12 HEX NUTS	8	Z18-12
15.	12mm DIA SPRING WASHER	4	Z12-02-12
16.	SLEEVE	1	D52012-95
17.	1/4" DIA TENSION PIN x 3/4" LONG	1	Z03-20-062
18.	DISPENSER MOUNTING (LOWER)	1	WD60-DMLH
19.	M12 HEX HD BOLT x 130mm LONG	1	Z26-094D
20.	M12 LOCKNUT	3	Z23-12
21.	M8 HEX HD BOLT x 35mm LONG	1	Z26-042S
22.	M8 LOCKNUT	1	Z23-08
23.	M12 HEX HD SET x 30mm LONG	6	Z26-082S
24.	M12 HEX HD BOLT x 100mm LONG	1	Z26-092S
25.	CONE (BOTTOM)	1	Z06-45-02
26.	CLEVIS (M10)	1	Z49-335
27.	PIN (5/16" DIA C/W CLIP)	2	Z49-337
28.	M12 HEX HD BOLT x 80mm LONG	1	Z26-0901B
29.	3/4" DIA FLAT WASHER	1	Z10-02-19
30.	FILM PULL DOWN BRACKET ASSY	1	WD65-FPDB
31.	FILM PULL DOWN ARM ASSY	1	WD65-FPDA
32.	RETAINING WASHER	1	WD60-859
33.	ROLLER	1	WD60-866
34.	2" x 1/4" SPLIT PIN	2	Z01-23-29
35.	4mm "R" CLIP	1	Z36-02
36.	BISSEL PIN (110mm LONG)	1	WD60-874
37.	HYDRAULIC RAM	1	Z01-01-AW25
38.	M12 HEX HD SET x 50mm LONG	1	Z26-086S
39.	5/16" UNF HEX NUT	1	Z15-05
40.	1/8" BSP ST. GREASE NIPPLE	1	Z39-60
41.	M16 LOCKNUT	1	Z23-16
42.	1" GB PLASTIC CAP	2	Z32-14
43.	1" DIA FLANGE BEARING	1	Z06-48
44.	DISPENSER MAST LOWER SUPPORT	1	WD63-DMJH
45.*	5 BANK SPOOL VALVE (DIN)	1	Z01-03-018D5
46.*	M8 HEX HD SET x 20mm LONG	3+4	Z26-039S
47.*	M8 HEX NUT	1+4	Z18-08
48.*	8mm DIA SPRING WASHER	3+4	Z12-02-08
49.*	8mm DIA FLAT WASHER	4	Z11-02-081
50.	FILM MAST SOCKET	1	WD610-FMS
51.	WINCH CABLE MOUNTING BRACKET	1	WD610WCM
52.	FILM MAST ADJUSTER	1	Z39-101
53.	3/16" WIRE ROPE x 2'-0" LONG	1	Z39-20
54.	WIRE GRIPS	2	Z39-04

NOTE: ITEMS MARKED WITH * DENOTES ITEMS REQUIRED FOR 1260S MODELS ONLY

TANCO AUTOWRAP 1260 MODEL 1996
 END ROLLER MOUNTING BRACKET ASSEMBLY



PARTS LIST

ITEM NO.	DESCRIPTION	QTY	PART NO
1.	END ROLLER SOCKET ASSY.	4	WD612-ERS
2.	END ROLLER MOUNTING BRACKET	2	WD612-ERM1
3.	END ROLLER	6	Z06-AWR
4.	BEARING (25mm DIA)	12	Z06-AWRB-93
5.	PIN	6	WD612-ERP
6.	3/16" DIA SPLIT PIN x 1 1/2" LONG	6	Z03-21-14
7.	PLASTIC CAP	4	Z32-07
8.	M12 HEX HD SET x 40mm LONG	8	Z26-084S
9.	M12 HEX NUT	8	Z18-12
10.	SPACER (LONG)	6	WD612-064
11.	SPACER (SHORT)	6	WD612-065

TANCO AUTOWRAP 1260S/1260A MODEL 1996
LIFT ARM ASSEMBLY

PARTS LIST

ITEM NO	DESCRIPTION	QTY	PART-NO.
1.	LIFT ARM ASSY	1	WD625-LA
2.	LIFT ARM - GRAB FRAME	1	WD625-LAGF
3.	LIFT ARM - GRAB SECTION	1	WD625-LAGS
4.	HYDRAULIC RAM D/A	1	Z01-01-140
5.	GRAB FRAME PIVOT PIN C/W GREASE NIPPLE	2	Z03-01-796
6.	M10 HEX HD SET x 25mm LONG	7	Z26-0618
7.	10mm DIA SPRING WASHER	8	Z12-02-10
8.	10mm DIA FLAT WASHER	7	Z11-02-10
9.	MAIN FRAME BOTTOM RAM PIVOT PIN	1	Z03-02-54
10.	MAIN FRAME AND GRAB TOP RAM PIVOT PIN	2	Z03-03-50
11.	1/4" DIA SPLIT PIN x 1. 1/2" LONG	1.1	Z03-21-27
12.	GRAB BOTTOM RAM PIVOT PIN	1	Z03-01-218
13.	GRAB PIVOT & LIFT ARM PIVOT PIN C/W GREASE NIPPLE	4	Z03-01-905
14.	1" DIA HEAVY FLAT WASHER	6	Z10-02-25
15.	HYDRULIC RAM D/A	1	Z01-01-140S
16.	RUBBER BUFFER 100mm DIA x 40mm LONG	2	Z40-26
17.	M16 HEX NUT	4	Z18-16
18.	CHASSIS ASSY	1	WD60-CHA
19.	HYDRAULIC RAM (LIFT ARM)	1	Z01-01-AWQ12
20.	RAM BOTTOM PIVOT PIN	1	Z03-02-330
21.	RAM TOP PIVOT PIN	1	Z03-01-797
22.	TENSION BUSHES	8	Z03-20-015
23.	BUFFER 56mm DIA x 40mm LONG	1	Z40-20
24.	M10 HEX NUT	1	Z18-10

WD64-PL25

TANCO AUTOWRAP 1996 MODEL
HYDRAULIC BALE RAMP

PARTS LIST

ITEM	DESCRIPTION:	QTY:	PART NO:
1	HYDRAULIC BALE RAMP ASSY	1	WD65-HBRF
2	RAMP MAIN PIVOT PIN C/W GREASE NIPPLE	2	Z03-01-905
3	M10 HEX HD SET X 20mm LONG TUFLOCK	2	Z26-060ST
4	10mm DIA MACHINED FLAT WASHER	2	Z11-02-10
5	10mm DIA SPRING WASHER	12	Z12-02-10
6	BALE MAT	1	Z05-02-BRH
7	M10 X 30mm LONG CUP HD.SQ BOLTS	5	Z13-112
8	M10 HEX NUTS	5	Z18-10
9	HYDRAULIC RAM C/W ACCUMULATOR	1	Z01-01-AWD
10	SPAREX PIN	1	Z03-04-74
11	SPAREX PIN	1	Z03-04-73
12	7/16" DIA LINCH PIN	2	Z03-22-06
13	ACCUMULATOR MOUNTING PLATE	1	WD65-AMP
14	CLAMPING PLATE	1	WD65-231
15	M8 HEX HD BOLT X 80mm LONG	4	Z26-050B
16	M8 LOCKNUT	4	Z23-08
17	M28 X 1.5 PITCH HEX NUT	1	Z18-28

FAULT FINDING

PROBLEMS.

REMEDY.

1. Drive Roller and Bale belt not driving
Check and replace shear pins in sprocket on drive roller.
2. Film Breaking
Wash off dispenser and slave rollers. Change roll of film. Use recommended films only.
3. Film not wrapping evenly on bale.
Adjust film mast so centre of film roll is aligned with centre of bale.
4. Film Tearing on Ramp.
Check for sharp edges and remove.
5. Bale Skidding on Ramp.
Fit Hessian Bag or piece of carpet to Ramp.
6. Film Dispenser not Pre-Stretching Film.
Check that both Rollers turn when one is turned by hand. If not, fit new gears or replace unit.
7. Tyres coming off 4" platform Support Wheels.
Replace Wheels - Reduce speed below 30 r.p.m. - Do not grease path of wheels on platform. Check that bale does not get trapped between arms and turntable when being loaded.

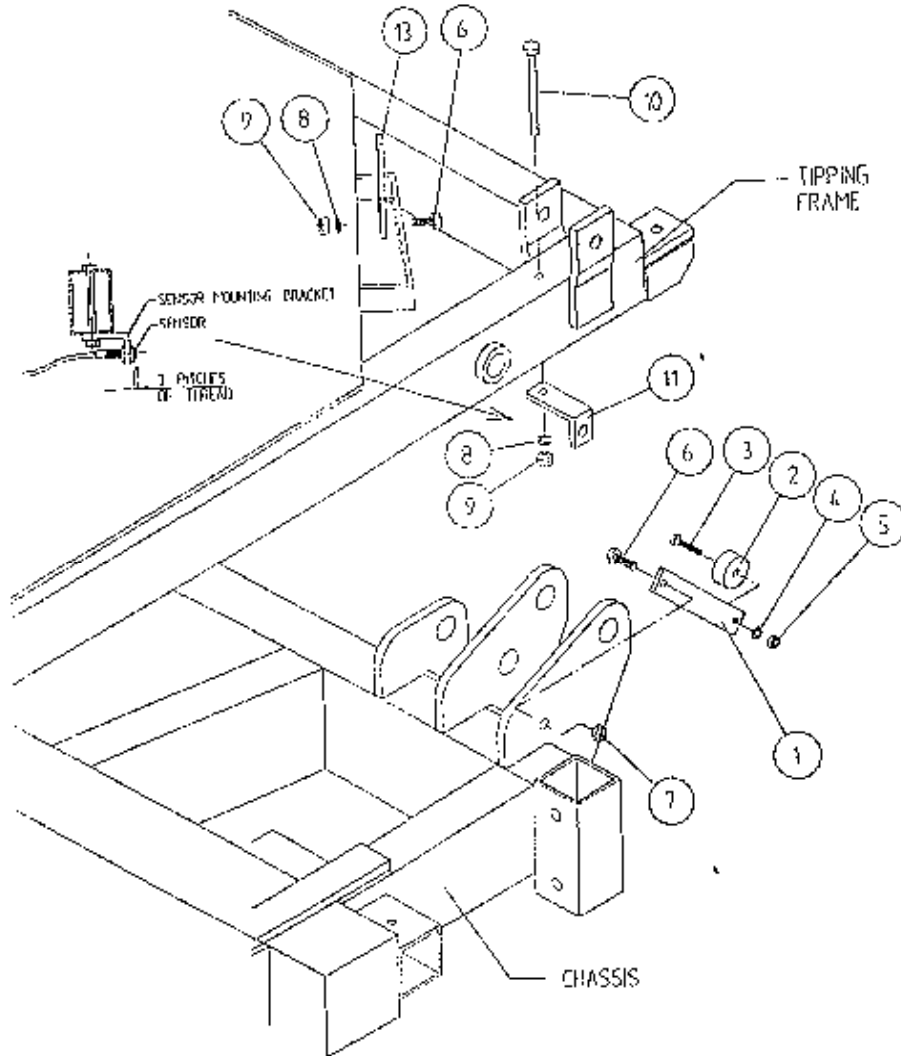
If this happens lower arm and start again.
8. Hydraulic Bale Ramp not returning to raised position after tipping off bale.
See instructions for recharging hydraulic cylinder.
9. Bale Belt Tracking Adjustment
 - (i) Ensure vertical rollers (plastic) are in tight on the bale. Remember that the bale will reduce in size during wrapping and, on the round bales in particular, the corners will become rounded so that the bale will tend to move sideways due to centrifugal forces. Now, if the plastic rollers are too far apart, the bale will move against one of the plastic rollers causing the belt to move in the opposite direction. Always adjust the vertical plastic rollers so that they keep the bale central on the belt.
 - (ii) Adjust bale stop on lift arm so that bale is loaded centrally onto platform.
 - (iii) Check that bale belt is fitted so arrow points in direction of travel.
 - (iv) Check that both 8" rollers underneath the bale belt are parallel to each other. Remember the golden rule - a belt will always move up a slope: So, if the belt continually moves to our side, adjust idler roller to a narrower setting on the opposite side to which the belt travels.
 - (v) Check that gripface strips are securely fixed to the roller and have not moved out of alignment.
 - (vi) Check that is the same measurement each side by running a string around the belt and measuring it. If one side is longer than the other replace the belt.

TANCO AUTOWRAP
CUT AND START UNIT (1996)
PARTS LIST

ITEM NO	DESCRIPTION	QTY	PART-NO.
1.	MAIN MOUNTING FRAME ASSY	1	WD605-MF1
2.	LATCH ASSY.	1	WD605-LA
3.	PUSH PLATE / POINTER ASSY.	1	WD605-PPP
4.	GUIDE ASSY	1	WD605-GD1
5.	PLUNGER ASSY	1	WD605-PL1
6.	GAS SPRING	1	Z07-47
7.	GAS SPRING MOUNTING BRACKET	1	WD605-GSM
8.	WARNER LINEAR ACTUATOR D11 10B5 08	1	ZD605-510
9.	"U" BOLT	1	WD605-45
10.	SPACER 1" X OD X 1/2" ID X 6mm LONG	2	WD605-65
11.	SLEEVE 1/2" DIA O.D. X 13/32" DIA I.D.	1	WD605-47
12.	M8 HEX HD SET X 35mm LONG	1	Z26-042S
13.	TRIGGER ASSEMBLY	1	WD605-TRG
14.	COLLAR 1" DIA BRIGHT RD. X 41.5mm LONG	1	WD605-51
15.	SPACER	1	WD605-100
16.	BLADE GUARD/MOUNTING BRACKET	1	WD605-105
17.	M12 HEX HD BOLT X 80mm LONG	2	Z26-0901B
18.	BISSEL PIN	1	Z03-22-AW100
19.	4mm "R" CLIP	1	Z36-02
20.	SPRING 16mm O.D X 1.5mm WIRE X 48mm LONG	1	Z07-34
21.	OILITE OIL RETAINING BUSH 1 1/8" O.D.	3	Z06-105
22.	1 1/2" X 1/4" DIA TENSION PIN	1	Z03-20-07
23.	M12 LOCKNUTS	2	Z23-12
24.	M12 HEX HD BOLT X 65mm	1	Z26-0882B
25.	M8 GRUB SCREW	1	Z28-008
26.	M8 HEX HD SET X 25mm	3	Z26-040S
27.	M12 BINX LOCKNUT	4	Z23-12BX
28.	M8 LOCKNUT	8	Z18-08
29.	M6 LOCKNUT (NYLOCK)	2	Z23-06
30.	10mm DIA FLAT WASHER	10	Z11-02-10
31.	8mm DIA FLAT WASHER	5	Z11-02-08
32.	6mm DIA FLAT WASHER	2	Z11-02-06
33.	3mm DIA SPLIT PIN	2	Z03-21-02
34.	BLADE	1	WD605-104
35.	MAIN GUARD	1	WD605-MG
36.	M8 HEX HD SET X 20mm LONG	2	Z26-039S
37.	8mm DIA SPRING WASHER	9	Z12-02-08
38.	EDGING STRIP	1	Z44-12
39.	M10 HEX HD SET X 20mm	2	Z26-060S
40.	8mm DIA FLAT WASHER 1" O.D.	4	Z11-02-081
41.	PACKER	1	WD605-133
42.	M8 X 40 COUNTER SUNK BOLT	2	Z13-5-08X40
43.	M12 HEX HD BOLT X 50mm LONG	1	Z26-086B
44.	M10 LOCKNUT	1	Z23-10

TANCO AUTOWRAP CUT AND START UNIT 1996

SENSOR AND MAGNET MOUNTING BRACKETS



PARTS LIST

ITEM NO.	DESCRIPTION	QTY.	PART-NO.
1.	MAGNET MOUNTING BRACKET	1	WD605-165
2.	MAGNET	1	D6043
3.	M6 HEX HD SET x 30mm LONG	1	Z26-022S
4.	6mm DIA FLAT WASHER	1	Z11-02-06
5.	M6 LOCKNUT	1	Z23-06
6.	M8 HEX HD SET x 25mm LONG	2	Z26-040S
7.	M8 LOCKNUT (NYLOCK)	1	Z23-08
8.	8mm DIA SPRING WASHER	2	Z12-02-08
9.	M8 HEX NUT	2	Z18-08
10.	M8 HEX HD SET x 100mm LONG	1	Z26-057S
11.	SENSOR MOUNTING BRACKET	1	WD605-58
12.	SENSOR MOUNTING FLAT	1	WD605-164

TANCO AUTOWRAP AUTOMATIC MODELS
Cut and start
Fault Finding Summary.

This summary is to be read in conjunction with operators handbook.

Note: It has been found that most faults can be attributed to a bad power supply. Therefore it is essential that power supply be taken directly from battery terminals, ensuring correct polarity.
Operating voltage is 10V D.C. (under load) to 13.5V D.C.

Problem

(1) Bale wrap monitor does not power on.

Proposed Remedy

(a) Check polarity on connections to battery terminals.

(b) Check fuse, in power supply cable to controller.

(2) Plunger does not come out after 2 revolutions of turntable.

(a) Check operation in manual mode to ensure that plunger travels in and out. If the plunger does not travel in and out, check all connections from six pin plug, through slip ring to linear actuator.

(b) Check fuse in power supply cable to junction box and replace if necessary.

(2) (i) Buzzer sound continuously "bleep" bleep" and bale wrap monitor does not count above 2 revs.

(c) Check voltage while operating in manual mode. This voltage should be no lower than 10V D.C. (under load). Also check connections on battery terminals.

(d) Check that bale wrap monitor is counting revolutions and if not check that turntable sensor is within 6mm of magnet on turntable.

(e) Carry out continuity check of turntable sensor, by taking reading across 2 & 3 in six pin plug.

(3) Plunger snaps closed after about 7 to 8 turntable revolutions. This is caused by the Linear Actuator not stopping in park position.

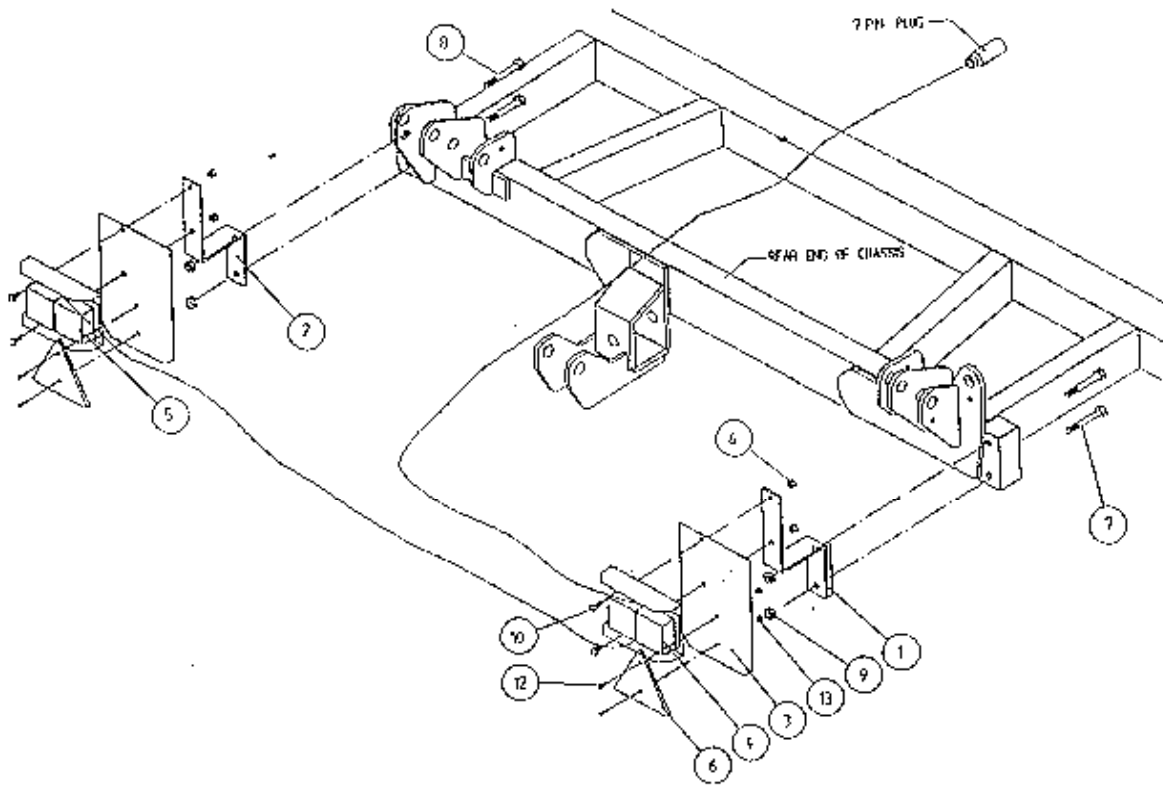
(a) Reduce setting for programme (1), which indicates the number of seconds required to reverse to park position. Setting can be altered in increments of 0.5 sec. In the park position there should be 5mm to 12mm clearance between cam on push plate assy and latch trigger.

(4) When machine is tipped plunger does not close.

(a) Check clearance between tip sensor on back of tipping frame and magnet of 5mm to 6mm.

(b) Check that tip sensor passes magnet, if not adjust magnet position.

TANCO AUTOWRAP TRAILED MODELS LIGHTING KIT



ITEM NO	DESCRIPTION	QTY	PART-NO.
1.	LIGHT MOUNTING BRACKET RHS	1	WD60-LMB
2.	LIGHT MOUNTING BRACKET LHS	1	WD60-899
3.	LIGHT MOUNTING PLATE	2	WD60-898
4.	LIGHT CLUSTER RHS	1	Z05-30R
5.	LIGHT CLUSTER LHS	1	Z05-30L
6.	TRIANGULAR REFLECTOR	2	Z04-62
7.	M12 HEX HD BOLT X 100 LONG	2	Z26-092B
8.	M12 HEX HD BOLT X 90 LONG	2	Z06-091B
9.	M12 LOCKNUT	4	Z23-12
10.	M8 HEX HD SET X 20 LONG	4	Z26-39S
11.	M8 LOCKNUT	4	Z23-08
12.	M6 CHEESE HEAD SET X 20 LONG	4	Z13-15
13.	M6 LOCKNUT	4	Z23-06

